

ST. GEORGE NEWSLETTER

January 2024

FROM THE SUPERINTENDENT'S DESK

Dear St. George Families & Community Members,

St. George MSU needs your feedback on how we're doing! **Please complete this [Family & Community Survey](#)** to let us know what you think. [The survey is available here.](#)

St. George MSU is a community school district and the heart & strength of our district is the community of St. George. The only way we can realize our mission - to ensure that every single student thrives and to contribute to the Town of St. George - is in partnership with our families & community. Thank you for helping us come so far and accomplish so much. There's still plenty of work to do - as there always will be - but I'm grateful for where we're at and for your feedback, which will help guide us as we move forward!

Thank you for sharing your feedback and input through the [Family & Community Survey!](#)

Best,

Mike Felton
St. George MSU Superintendent
m.felton@stgeorgemsu.org

Launch of the Sustainable Housing Program

The town of St. George is a place of storied history, of multi-generational families, and of families who came to visit, who stayed, and some who regularly return. With 2500 residents and over double that population in summer, current housing trends and prices have made it difficult for existing and new residents—our teachers, our sternmen and fishermen, volunteer firefighters, tradespeople, hospitality workers, town staff, and other workers—to find attainable housing. Our initiatives aim to facilitate affordable housing that will serve our year-round community, making our local businesses more sustainable and our town, school, and community more resilient in the face of economic and other changes. To learn more about our efforts, please visit: <https://www.stgeorgecommunity.org/housing/>.

Alane Kennedy
St. George Community Development Corporation
207-372-2193

TOWN CALENDAR

Town website: www.stgeorgemaine.com

School website: www.stgeorgemsu.org

January 2024

Jan 1 New Year's Day – Town Office Closed
Jan 2 Comprehensive Plan 7PM
Jan 4 Conservation Commission 4 PM
Jan 8 P&R Committee 6:30
Select Board 7:00
Jan 9 Senior Luncheon - Delivered 11:00-1:00
Planning Board 7:00
Jan 15 MLK Holiday – Town Office Closed
Jan 22 Select Board 7 PM
Jan 23 Planning Board 7 PM

The St. George Fire Department meets every Wednesday at 7:00 pm at the Tenants Harbor Fire Station.

Parks & Recreation News

SENIOR LUNCHEON

Jan 9 Chili- Delivered – if you are a St. George Senior Citizen and would like to have lunch delivered to you, please call the town office at 372-6363 and leave your name, physical address and phone number. I will call all those on the list to confirm you would like a lunch. Other Luncheon delivery dates – Feb 13 and Mar 12.

Winter Recreation News

The skating rink is installed – now we root for a string of very cold nights (sub 10 degrees to get the ice solid. Thanks for leaving the surface alone until that happens. A green sign will be posted at the rink when it is good to skate on.

Ski Club begins Jan 4! Skiing Thursdays 3:30-7:00 at the Snow Bowl. \$20 each, lift tickets and rentals

P&R News: to get regular recreation news, sign up for our email list on the town website

TOWN INFORMATION

Town Office: 372-6363 **Fax:** 372-8954

Hours: Monday-Friday 8 am-4 pm

Transfer Station: 372-6451

Hours: Tue through Sat 8-4

Select Board & Assessors

Van Thompson, Chair	372-8000
Randy Elwell	372-0602
Steve Cartwright	372-6534
Jane Conrad	372-6621
Wendy Carr	372-0645

ARE YOU EXPECTING A BABY?
KNOW SOMEONE IN SAINT GEORGE WHO IS?



The Welcome Lil' Dragon program provides a birthday box brimming with clothes, sleep sacks, baby toiletries, blankets, diapers, wipes, and more to all St. George newborns and their families. Items are brand new, and many are hand-made by folks in the community.

WE WANT TO HELP
WELCOME THE NEWEST LIL' DRAGONS TO TOWN!

For more information, leave a message at
372-2193 or email alane@stgeorgecommunity.org.

A PROGRAM OF ST. GEORGE COMMUNITY DEVELOPMENT CORPORATION, TENANTS HARBOR, ME



**FOR THE COMMUNITY
CUPBOARD**

PICK UP A CLYNK BAG OUTSIDE AT 47 MAIN STREET.
FILL IT WITH YOUR RETURNABLES.
DROP IT AT YOUR LOCAL HANNAFORD.
BAM! THAT'S FOOD ON THE TABLE!



YOU CAN ALSO TRANSFER YOUR CLYNK ACCOUNT
DOLLARS DIRECTLY TO THE ST. GEORGE COMMUNITY
CUPBOARD ONLINE AT CLYNK.COM.

TOWN OFFICE REMINDERS

Dog Licenses due by January 31. \$25 late fee starts in February

Documented and state registered boats can now be renewed for 2024

Conservation Commission

Trails & Preserves

Fort Point Trail Rehabilitation Project

The Fort Point trail is now OPEN to foot traffic only. Bicycles and motorized vehicles are not allowed as they would damage the trail. Our contractor Kennebec Trail Company completed their portion of the work just before Christmas. The added work on the State property combined with their high standards and working through an extremely wet season delayed the planned Fall completion. The trail may be closed on occasion due to weather conditions that could cause damage to the trail if in use.

Project Progress: Recent work includes completing the boardwalk construction and the trail section from the parking lot trailhead to the bridge. Conservation Commission members with help from a group of Blueberry Cove middle grade students constructed the area around the kiosk. The loan of an excavator from Hoppe's Tree Service and the student help made for quick work on the kiosk area. Our thanks go out to these students and Tim and Hunter Hoppe.



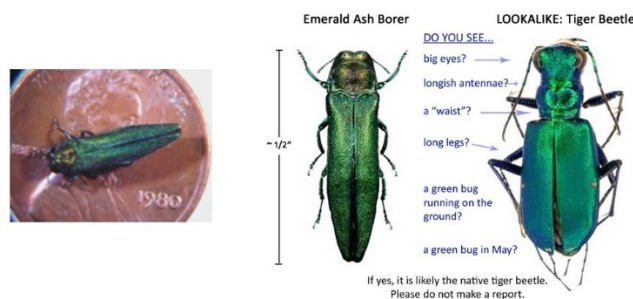
Invasive Pests

Invasive tree pests in the winter?

Not much is happening with bugs right now, but it's a good time to learn about some pests to be concerned about in the coming year. One of these is the Emerald Ash Borer (EAB) that attacks primarily ash trees. The areas infested in Maine by this pest have doubled over the last several years and now covers most of the coastal areas of Maine. The Maine Department of Forestry recently held a workshop on how best to manage an invasion of EAB and prevent tree loss.

(https://youtu.be/Wyh5ONuzUKs?si=7YfUz1Cf_7L5j71W). If you have an ash tree on your property or are simply concerned about keeping our Maine forests healthy, please check out the video. Here are a couple items covered.

Identifying EAB: the insect is emerald in color and quite small. The holes it makes in the bark are “D” shaped and if you peel back the bark there are “s” shaped tracks that destroy the ability of the tree to send nutrients up into the canopy.



(photo credits, left to right: Howard Russell, Michigan State University, PA Department of Conservation and Natural Resources (adapted))





We'll Take You There..

The Holidays are upon us. If you have errands to do, people to visit, and appointments to make - Neighbor to Neighbor is there to help. St. George Residents volunteer to drive their neighbors where they want to go. SO, if you need a ride, call us. If you'd like to drive, call us. If you want to donate, send a check to PO Box 172, Tenants Harbor, ME.

HAPPY HOLIDAYS!

Call 691-7069

ridesinstgeorgeme.com





Providing no-cost food & hygiene items to
St. George residents.

Every Thursday from 2 pm to 7 pm at
47 Main St.



CALL 207-372-2193
OR REQUEST ONLINE AT
WWW.STGEORGECOMMUNITYCUPBOARD.ORG



COMMUNITY HOME REPAIR

Eligible homeowners in St. George can get assistance
to make small repairs to their homes.

To Apply, Volunteer, or Donate Visit
www.stgeorgecommunity.org/home-repair

St George Community Development Corporation
47 Main Street, PO Box 160
Tenants Harbor, ME 04860

**Town of St George
PO Box 131
Tenants Harbor, ME.
04860**